

Santa Cruz High School

415 Walnut Avenue Santa Cruz, California 95060
 (831) 429-3960, Ext 300 - Fax (831) 429-3427
 www.schs.sccs.net

Michelle Poirier, *Principal*, x 201
 Rene Ohana, *Assistant Principal*, x 203
 Rishi Lal, *Assistant Principal*, x 202

Counselors:
 Teresita Diaz, A-F x 306
 Leslie Rodriguez G-N x 310
 Samuel Solis, O-Z x 307

School Profile
2020/2021



CEEB Code:
053297

Santa Cruz High School is a comprehensive public school with a student population of approximately 1,150 in grades nine through twelve. SCHS is particularly noted for having a diverse student body. Students from various racial, cultural and socio-economic backgrounds and lifestyles join to enrich their personal and academic experiences in an unusually compatible atmosphere. In addition to comprehensive college preparation and vocational curriculums, many special programs are available on our campus. Santa Cruz High, a California Distinguished School, accredited by the Western Association of Schools and Colleges, is situated in the heart of the city of Santa Cruz, a coastal community of 64,000 people.

CURRICULUM

Santa Cruz High School utilizes the Excel Block Schedule. Under this model, students take three or four 90-minute classes each day for 18 weeks in the fall, and three or four different classes for 18 weeks in the spring. The daily 90-minute classes are equivalent to year-long classes in more traditional two-semester systems. This program has proven to be highly effective throughout the nation, California and here at SCHS.

Graduation Requirements:

English	40 Credits
Social Studies	30 Credits
Mathematics (Int. Math 1B required)	20 Credits
Science	20 Credits
Fine and Applied Arts	25 Credits
Physical Education	20 Credits
Health	5 Credits
Elective Courses	70 Credits
Total:	230 Credits

HONORS and AP CLASSES

Science:

Chemistry (H)*
 Physiology (H)
 Enviro Sci. (AP)
 Chemistry (AP)
 AP Physics 1 (AP)
 AP Physics 2 (AP)
 Biology (AP) #

English:

English 2 (H)
 American Lit (H)
 English Lang & Comp (AP)
 English Lit & Comp (AP)

Social Sciences:

US History (AP)

World Languages:

French (AP)
 Spanish (AP)

Mathematics:

Analytic Geometry/Pre-Calc (H) [Math Academy 2]
 Calculus AB (AP)
 Calculus BC (AP)
 Statistics (AP)
 Computer Science A (AP)

* Offered until 18-19' year
 # Offered starting 2019-20'

SCHOOL WIDE SAT RESULTS

SAT Reasoning Test (SAT I)	2020	2019	2018
Evidence Reading and Writing	604	592	598
Mean Math	626	606	619

NATIONAL MERIT SCHOLARS

Graduating Class of:	2021	2020	2019
Total Graduating Class	243	268	257
Number of Semi-Finalists	5	5	4
Number of Commended	5	5	7

GRADING and RANKING

Five units of credit are awarded for each term passed with a grade of D or better. Passing grades are A, B, C, D and P. A weighted four point system is used to calculate grade point average:
A = 4, B = 3, C =2, D =1, F=0

GPA Calculations:

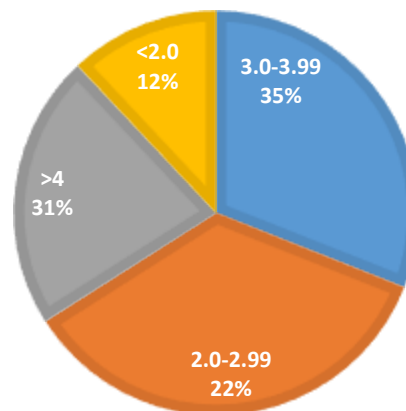
Cumulative unweighted GPA: Unweighted calculation of all courses taken in grades 9-12.

Cumulative weighted GPA: Unweighted calculation of college prep classes taken in grades 10 – 12.

Academic 10-12 GPA: Weighted calculation of academic courses completed in grades 10 – 12, in which one extra point is given for each honors and advanced placement course with a grade C or better.

Class rank: Based on the student's Weighted Academic 10-12 GPA.

WEIGHTED ACADEMIC GPA CLASS OF 2021



AP TEST RESULTS

AP Tests	2020	2019	2018
Number of Exams Taken	494	376	347
Percentage Qualifying (3+)	72%	78%	74%
Percentage Scoring 4 or 5	49%	55%	45%
Percentage Scoring a 5	24%	27%	22%

POST HIGH SCHOOL PLANS

	2020	2019	2018
4 Yr College Eligible	72%	74%	71%
Enrolled in 4 Year	31%	43%	41%
Enrolled in 2 Year College*	N/A	50%	46%

*Estimated, as no final transcripts sent

COLLEGE AND UNIVERSITY ATTENDANCE CLASS OF 2020

California State University

CSU Cal Poly SLO
CSU Chico
CSU Humboldt
CSU Los Angeles
CSU Pomona
CSU Sacramento
CSU San Diego
CSU San Francisco
CSU San Jose
CSU Sonoma

University of California

UC Berkeley
UC Davis
UC Irvine
UC Los Angeles
UC Santa Barbara
UC Santa Cruz
UC San Diego

Private and Out of State Public Colleges

Arizona State University
Chapman
Benedict College
Charleston College
Chapman University
College of Idaho
Columbia
Culinary Institute of America
Loyola Marymount
MIT
Montana State University

North Carolina Central University
Oberlin College
Parson The New School For Design
Reed College
Santa Clara University
Stanford
University of Nevada, Reno
University of Oklahoma
University of Connecticut
University Oregon
University of Portland

University of San Francisco
University of Toronto
University of Utah
University of Waterloo
Utah State University
University of Waterloo
Utah State University
Wesleyan University
Wheaton College
Whittier College
Yale